

Files

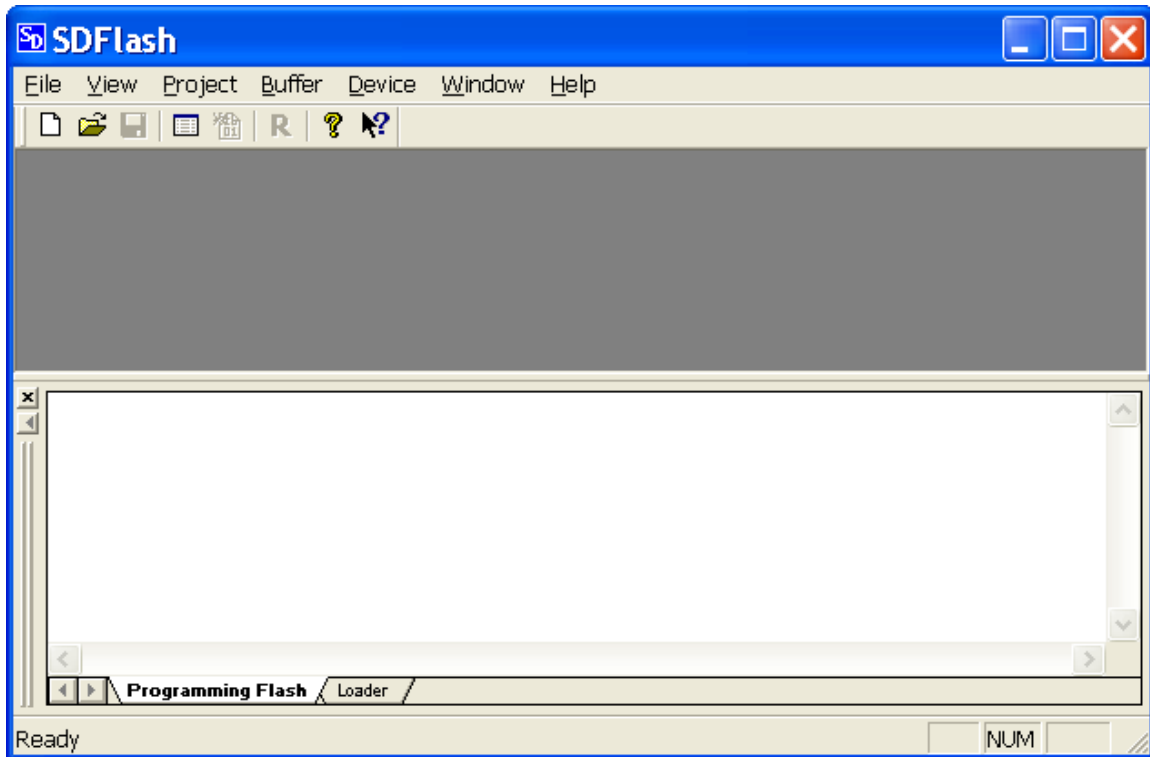
The folder 'Board_Firmware_Update-Essential_Uutilities' contains the following files:

1. *ReadMe.pdf*
2. *Installing the Programming Tools.pdf* (this file)
Instructions how to install the programming tools, which normally should take place only once.
3. *Programming the DSP.pdf*
Instructions how to program the DSP flash memory whenever it should be updated.
4. *setupCCSPlatinum_v30103.exe*
5. *sdf28xx_v3_0_serial.exe*
6. *sdopts.cfg*
7. *AlgorithmFile.ALG*
8. *ProjectFile.sdp*
This is the SDFlash project file directed to in step 7 of the Installation Procedure.

Installation Procedure

1. Run *setupCCSPlatinum_v30103.exe*
(accept all the defaults suggested)
2. Run *sdf28xx_v3_0_serial.exe*
(accept all the defaults suggested)
3. Now create a desktop shortcut to
CCStudio_v3.1\specdig\sdf\bin\SDFlash.exe
(which should exist after the installations of steps 1 & 2).
4. Copy *sdopts.cfg* (file #6) to *WINDOWS/SYSTEM32*
Note: in case such file already exists, overwrite it, but, for the good order, first keep a copy of the original file.
5. Copy these two files to '*C:\CCStudio_v3.1*':
AlgorithmFile.ALG (file #7)
ProjectFile.sdp (file #8)

6. Run *SDFlash.exe* (do not confuse with *SdConfig*).
The following screen should appear:



7. Click on **File / Open Project...** and direct the utility to
C:\CCStudio_v3.1\ProjectFile.sdp
8. Click on **File / Save Project**.
9. Exit SDFlash.

Now we are ready to regular usage of SDFlash, as described in
'Programming the DSP.pdf'.